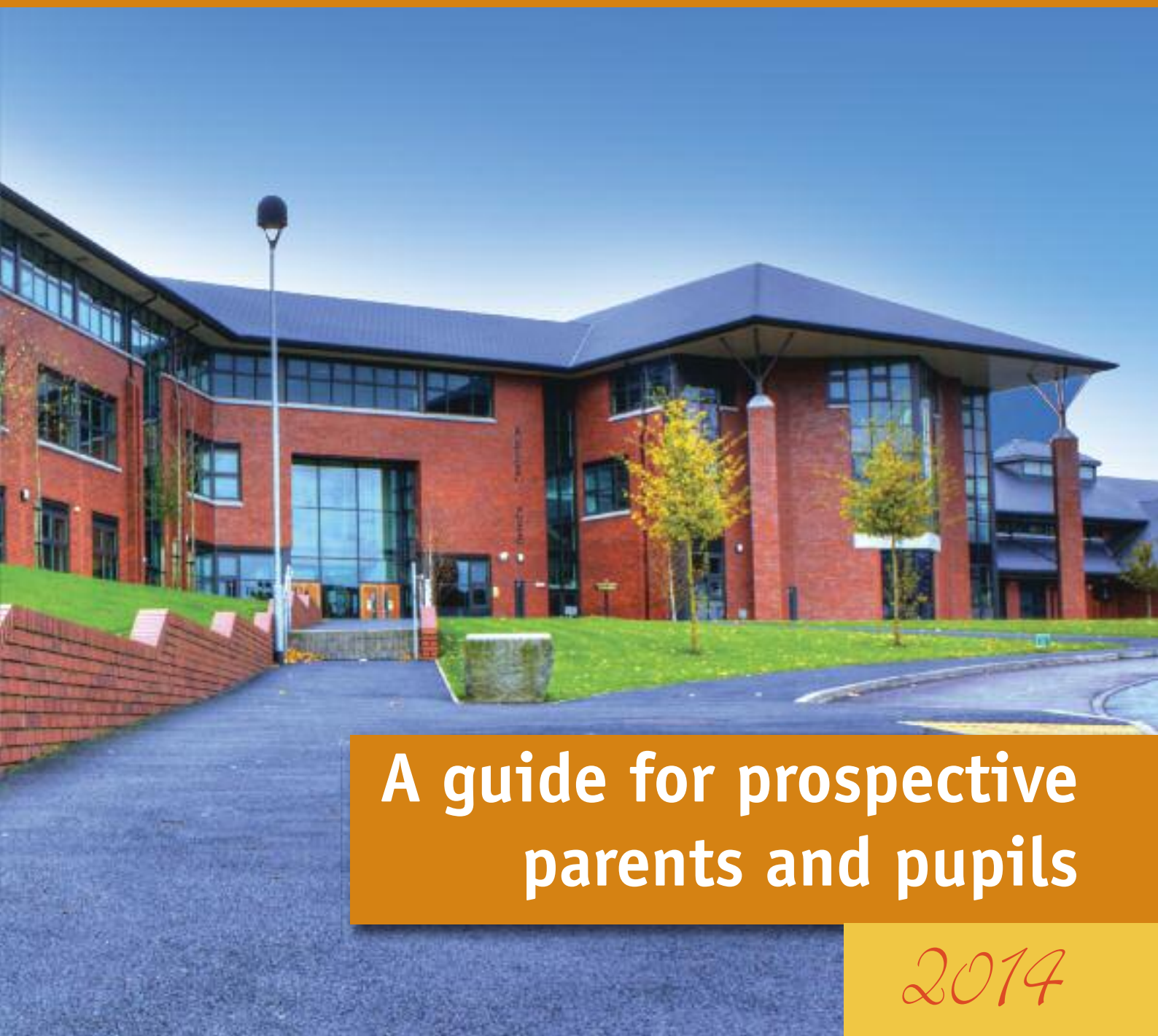




# The Abbey

Christian Brothers' Grammar School, Newry



**A guide for prospective  
parents and pupils**

*2014*



# Contents

|                               |       |  |       |
|-------------------------------|-------|--|-------|
| Headmaster's Welcome .....    | 1     | Spirituality .....   | 14    |
| Background.....               | 2     | Careers Education, Information,<br>Advice and Guidance ..... | 15    |
| New School Project.....       | 2     | Parental Links.....  | 15    |
| The School Day.....           | 4     | Homework .....   | 16    |
| School Uniform.....           | 4     | Curriculum .....   | 16    |
| First Year Induction .....    | 5     | Extra Curricular Groups .....                                | 18    |
| The School Library.....       | 6     | Admissions Policy.....                                       | 20    |
| Information Technology.....   | 7     | Grammar School Examination Performance .....                 | 21    |
| Study Arrangements.....       | 7     | GCE A2-Level Analysis .....                                  | 22    |
| Pastoral Care .....           | 8     | GCSE Analysis .....  | 22    |
| Pupil Behaviour .....         | 10    | Bus Services.....  | 23/24 |
| Abbey Code of Behaviour ..... | 11    |  |       |
| Inspection Report.....        | 12/13 |  |       |

*A journey of fun, learning  
and friendship*



**Abbey Christian Brothers' Grammar School**  
 77A Ashgrove Rd  
 NEWRY BT34 1QN

Telephone: Newry (028) 30263142  
 Fax: Newry (028) 30262514  
 E-mail: [info@abbeycbs.co.uk](mailto:info@abbeycbs.co.uk)  
 Website: [www.abbeycbs.co.uk](http://www.abbeycbs.co.uk)  
 Twitter: @Abbey\_CBS  
 Facebook: [www.facebook.com/abbeycbs](http://www.facebook.com/abbeycbs)  
 Headmaster: Mr. D. H. J. McGovern BEd, MEd

Voluntary Grammar  
 Denominational  
 Boys  
 Age Range 11-19

|                                      |     |
|--------------------------------------|-----|
| Enrolment Sept 2013:                 | 900 |
| Expected Enrolment Sept 2014:        | 920 |
| Approved Admissions Number for 2013: | 125 |
| Approved Enrolment Number for 2014:  | 850 |

Chairman of the Board of Governors: Mr Sean Óg McAteer

## Headmaster's Welcome

I am delighted that you have taken the time to get to know our school and I welcome you warmly. We are a school which has traditionally served the whole Newry, South Down and South Armagh area and are very proud of our traditions and our heritage.

This year sees the Abbey in a very strong position having successfully completed the move to our wonderful new building and expansive site and again having its academic and non academic successes publicised on a national level.

I hope that there are three elements of our school which become apparent to you quickly. Firstly, our pride in being a Catholic School in the Christian Brothers' tradition. This permeates all aspects of school life and how we treat each other.

Secondly, our desire to develop the whole person and cater for his spiritual, physical, social and pastoral needs to ensure that he is fully equipped for life after school.

Thirdly, our strong focus on academic excellence and attainment ensuring that each pupil can maximise his potential and that this can be realised at the very highest level.

An Education and Training Inspectorate report in November 2013 graded the school as outstanding in all areas inspected including the three elements mentioned above.

Enjoy your visit to our school and that warm Abbey welcome. If you have any further questions that are not answered, please do not hesitate to contact the school.

Mr D McGovern  
 Headmaster



## Background

The Abbey Christian Brothers' Grammar School is a valued member of the Edmund Rice Family which has as its origin the story of Edmund Rice – husband, father, widower, Religious Founder of two congregations – The Christian Brothers and Presentation Brothers – and lover of people especially those on the margins of society. The Abbey is dedicated to the constant enhancement and promotion of his spirit of service, mindful that the student is our *raison d'être*. The Christian Brothers first came to Newry in 1851 and the school derives its name from the celebrated Cistercian Abbey founded on the same site by St. Malachy in 1144. Since then the school has had several different locations in Newry, each making a positive impact on the local community. The Christian community of staff, students and parents aspire to produce pupils whose academic, physical, cultural, social and in particular spiritual potential is realised as fully as possible.

## New School

In January 2010 the Abbey moved in to its brand new, purpose built school on the outskirts of Newry. It is accessed from the Mourne Country roundabout to the north of the city on the Belfast Road and the grounds back on to the Sacred Heart Grammar School. The building is the most up to date school in Northern Ireland with modern fully equipped classrooms and laboratories. On top of this, there is a gymnasium, a weights room, a sports hall and three full size pitches including a full size, flood-lit synthetic gaelic pitch.

The school also includes an oratory for religious ceremonies and a fully equipped technology suite comprising planning rooms, systems rooms and manufacturing rooms. The Music Department has a range of music studios, practice rooms and recording rooms and the Drama facilities are excellent. As would also be expected from such a brand new facility, ICT provision is to the highest specification with computer suites and wireless laptops to the fore. There is also a large school canteen which will provide fresh, wholesome food catering for large numbers of pupils in a short period of time.



# Project





# The School Day

| Time        | Activity   |
|-------------|--|
| 8:15 –9:00  | Canteen open                                     |
| 8:30 –9:00  | Library open / Computer access in LG15           |
| 9:00 –9:15  | Registration / Assembly                          |
| 9:15 –9:50  | Period 1   |
| 9:50 –10:25 | Period 2   |
| 10:25–10:40 | Break  |
| 10:40–11:15 | Period 3   |
| 11:15–11:50 | Period 4   |
| 11:50–12:25 | Period 5   |
| 12:25–1:00  | Period 6 (Junior Lunch)                          |
| 1:00 –1:35  | Period 7 (Senior Lunch)                          |
| 1:35 –2:10  | Period 8   |
| 2:10 –2:45  | Period 9   |
| 2:45 –3:20  | Period 10  |
| 3:20 –3:30  | Buses depart                                     |
| 3:20 –4:35  | After school study / extra curricular activities |
| 4:35        | Link bus to Bus Depot departs                    |

## School Uniform

### THE SCHOOL UNIFORM CONSISTS OF

- Black blazer with crest
- Black trousers
- The school tie
- Plain white shirt
- Plain grey 'v' necked jumper (years 1-5).
- School sweatshirt (years 6 - 7)
- Black or grey socks
- Black shoes
- Black overcoat



# 1st Year Induction

This begins with a whole year group Mass in June before your son starts the Abbey. The following week, each individual pupil and parents will be invited to meet the Headmaster to begin the process for getting to know your son. The Year Tutor will then make contact with Primary schools and will often visit schools to ensure that the transfer of information is a smooth process. In term one, we will do the following:

- A two day Induction including school routines as well as fun activities
- Two senior pupils to accompany each class for the first week to iron out any problems and to act as a friendly face and a mentor
- 1st Year pupils are released earlier from class on the first few days to help canteen and bus arrangements
- A series of Outside Speakers addressing the year group
- A parents and pupils quiz organised by the Abbey Parent Teacher Association (A.P.T.A.) to help pupils settle in
- A 1st Year trip in term one to help friendship building
- All supported by an excellent team of Form Teachers and Year Tutor





## The School Library

Information handling skills are the essential tools for learning needed by all students if they are to make a successful and substantial contribution to the world of the twenty-first century for themselves and the wider community. The Abbey School Library is the key information centre for the school and provides the students with the opportunity to develop these essential skills.

We provide a positive library atmosphere for personal, group and class study as well as leisure time use. It is an excellent resource which is very well stocked and reminds pupils that information comes from many sources. Most importantly, it teaches that in today's electronic world, there is still great benefit and enjoyment from reading fiction in the form of a book.

*The future belongs to those who know how to learn.*

(J Abbot)





# Information and Communication Technology

At present all pupils in 1st Year are timetabled for one class of Information Technology each week, to learn skills in the use of word processing: Spreadsheets, Database, Internet, Logo and Desktop Publishing Software. It is expected that these skills will be carried over into other subject areas.

The school has a number of state of the art ICT suites and each department cluster has its own shared ICT area. On top of this other departments have specific exceptional ICT facilities e.g. Music, Technology, Art and Design and Moving Images. Appropriate filtering software has been installed on each network so that websites deemed unsuitable have been blocked from viewing. Students who wish to make use of the internet must sign with their parents a consent form which highlights a standard of behaviour expected for its use.

## Study Arrangements

To facilitate those students who wish to engage in private supervised study or who find it difficult to study at home, the Abbey provides several avenues of assistance:

### Morning Study

This is available on a supervised basis from 8:30am to 9:00am and students have full computer access.

### Lunchtime Study

This is available in the library for the 2nd half of each lunch period on a daily basis.

### Afternoon Study

Afternoon study is supervised by a teacher four days per week (Monday - Thursday) between 3.20pm and 4:35pm for those pupils who wish to attend.

### Senior School Study

During the 2nd and 3rd terms Upper and Lower 6th students may use the Study Hall facilities 3 nights per week from 4.00pm - 6.30pm. Supervision is carried out on a voluntary basis by parents and teaching staff.



## PASTORAL CARE

Pastoral Care is that dimension of the school which seeks to provide for the pupils a supporting and caring atmosphere in which they can set and realise personal, social, academic and spiritual goals. Each teacher, and in particular each student's Form Teacher, has a responsibility to seek to achieve this aim by appropriate classroom practice in addition to a general concern, sensitive to the needs of the individual pupil. A more focused approach is taken through counselling, through the Learning for Life and Work Programme (LLW) and by regular communication between all those responsible for a particular pupil's education and welfare. Mr Brady is the Senior Teacher responsible for student welfare and counselling.

### The Form Teacher and Pastoral Care

The needs of individual students are served by appointing to each class a Form Teacher whose job it is to get to know each class member and his background. Although all teachers will be caring towards their students, the Form Teacher endeavours to develop a deeper caring relationship by which each student's particular educational needs are identified and met. The Form Teacher's role, in all aspects, is therefore a vitally important one. In the Abbey we believe that the role is best carried out from a pastoral base which will positively influence our students' personal and social development, academic achievement and self discipline.

### Counselling Service

A caring relationship between teacher, particularly Form Teacher and pupil in which needs are sensitively recognised, will often be sufficient to resolve a pupil's difficulties. Where there is emotional or behavioural disturbance of a more serious nature, early detection will allow counselling to take priority over complaint and punishment. In counselling, a pupil who may have independently sought help from a Counsellor or who may have been guided in this direction by a teacher, will find support of a special kind. The Counsellor will provide for the student an opportunity to work through his difficulties with someone who will be non-judgemental, caring and understanding. The Counsellor will listen actively to the student, developing a warm relationship based on sincerity and mutual respect.

Confidentiality forms the cornerstone of the Counsellor's work. The student must be convinced of the safety of the counselling relationship to enable him to tell his story without the fear of disciplinary repercussions or unnecessary parental involvement. To assist this, the Counsellor will not be associated with the discipline structure.

The Counsellor will be aware of the occasional need to step outside confidentiality and will carefully discern, in consultation with Mr Brady, when to do so.



### Nurse

The Abbey has its own dedicated full time nurse who is available every day from 9:00am to 4:00pm. As well as dealing with any medical emergencies, the nurse is available to assist sick or distressed students. She maintains all student health records and liaises with external health agencies. The nurse is a vital member of the Pastoral Team and also links with the school counsellor and the Designated Teacher for Child Protection.

### Substance Misuse

The Abbey's policy on substance misuse is caring, supportive and firm. It is underpinned by a procedure which allows concerns to be passed on and which can deal effectively with any emergency. Parental contact takes place as soon as possible and there may be contact with external support agencies. Where a problem has been identified, the student will be expected, as part of the response, to engage fully in a structured pastoral support programme led by the school counsellor.

### Bullying

The Abbey has a strong anti-bullying policy and is proactive in ensuring that incidents of bullying are infrequent. Where they do occur, our response is swift and designed in a way to ensure that the problem is resolved effectively. This involves the Year Tutor working with the individuals involved in order to find a solution to the issue rather than imposing the solution. This process requires the students to develop understanding and empathy. Communication is open and honest and the pace of this process is dictated by the victim of a bullying incident and they are kept fully informed throughout.

### Child Protection

Mr O'Shea is the Designated Teacher for Child Protection. Where any member of staff has concerns about the care, safety or welfare of any pupil, he/she must discuss the matter with Mr O'Shea or a member of the Child Protection Team.

Parents having concerns of this nature should bring them to the attention of the appropriate Form Teacher or if preferred directly to Mr O'Shea, a member of the Child Protection Team or to the Headmaster.



## PUPIL BEHAVIOUR

In the Abbey, we place great emphasis on good pupil behaviour. We have discipline policies and structures in place that are continually reviewed and modified when necessary. Our discipline policies have three simple aims with which your son will become familiar:

- Have respect for people and property
- A safe, orderly learning environment
- Have pride in yourself and your school

This is the basis of what we try to teach our students, encouraging them to maintain these aims and responding when they are threatened. In this way we hope that our policies contribute to our overall aims of educating the whole individual. The staff of the Abbey recognise that the behaviour of the majority of students is excellent and that only rarely do they have to deal with serious disciplinary matters. This high level of compliance is an integral part of the success of our school. There is a high level of self-discipline among our students that shows a maturity that has come from home and which will stand them in good stead in their future. With this in mind, we are continually trying to increase positive recognition of and rewards for good behaviour

When dealing with indiscipline at all levels the school has formulated a listen, respond and educate approach. Listening is essential because it ensures that all the information about an incident has been gathered and pupils are given the chance to put forward their point of view. The response to breaking the school code, or failing to be respectful may include a sanction but if the teacher investigating any incident believes that a sanction is inappropriate then they are not tied to a particular response. Educating the student not to reoffend is a central aspect of dealing with indiscipline since a sanction alone is not a sufficient response.

When dealing with student indiscipline, teachers are encouraged to treat every student with respect, and punish the action not the student. This separating the student from the action is essential in maintaining good teacher pupil relations while at the same time maintaining high levels of good behaviour.

# ABBEY CODE OF BEHAVIOUR

Within the Abbey school we aspire to common expectations in terms of creating a culture of respect. Respect is obvious in the way we communicate: with each other, teachers, support staff, and our parents. The guidelines below seek to ensure that we are both clear and consistent.

Words which we associate with the atmosphere of our school include:

friendly, supportive, respectful, caring, co-operative and disciplined.

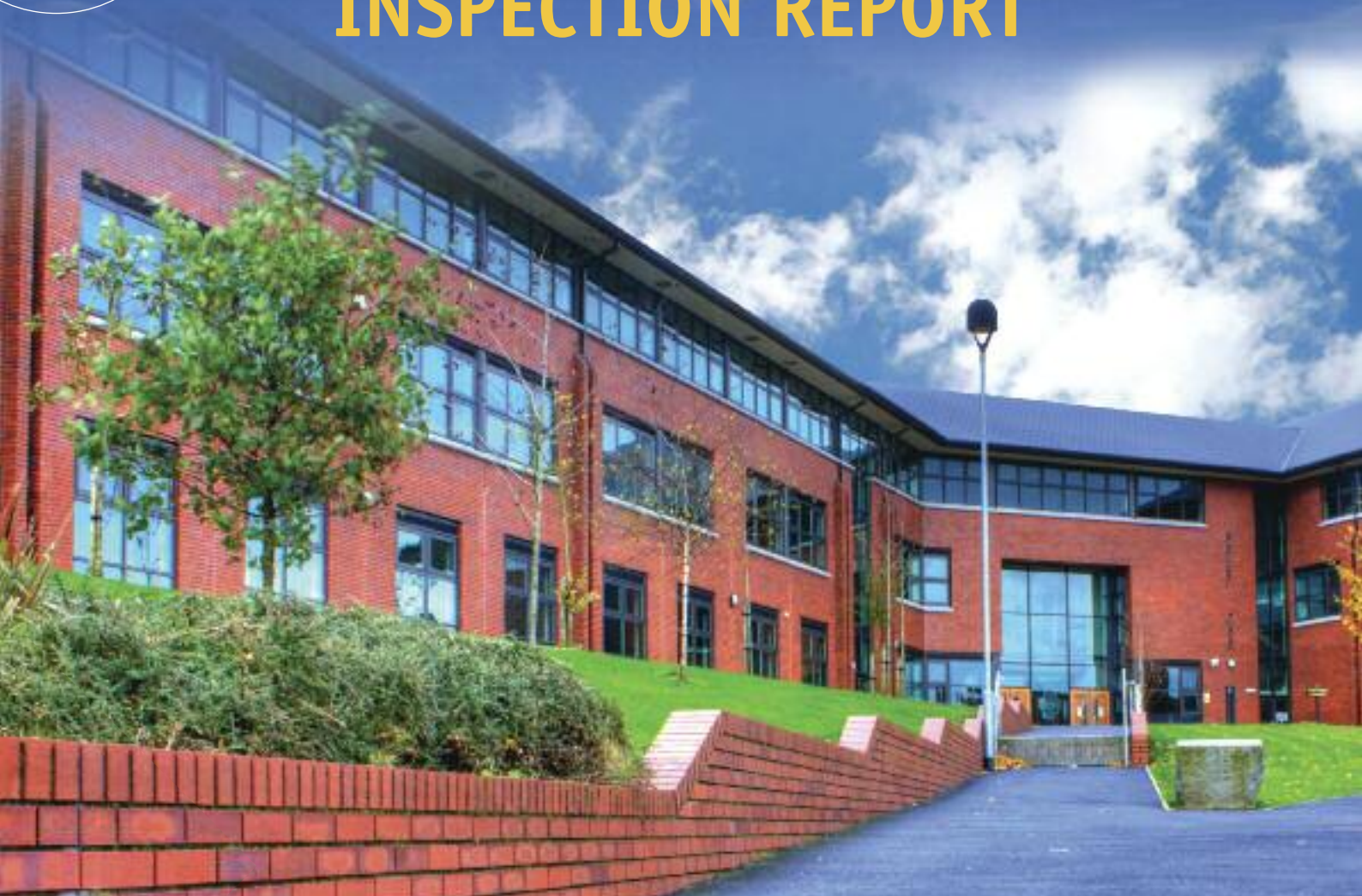
Throughout the school, teachers are expected to give the lead in creating and maintaining the following standards:

- Students line up quietly outside the classroom.
- When given permission to enter the classroom students take out the appropriate books and their diary and sit down immediately. Students ensure they have the required books and materials available for all lessons.
- If late for class the student knocks the door on arrival and offers the teacher a courteous explanation, causing minimum disruption.
- Any parental notes regarding absences, homeworks etc should be presented before the lesson commences.
- Students must take responsibility to catch up on any work missed.
- During class students can exercise respect for one another by putting up their hand when seeking permission to ask a question. Students should aim to encourage one another to give of their best at all times.
- If a visitor enters the classroom students should remain working, avoiding discussion, or listen attentively to an announcement.
- Students must show respect for all school and student property.
- When visiting a classroom with a message, knock and explain to the teacher the purpose of your visit.
- It is always courteous to stand aside and open the door for a visitor or a member of staff.
- Pupils are expected to avoid using inappropriate language while in school; class, corridors or yard.
- As a mark of respect for the position, students are expected to stand up when the Headmaster or the Vice Principal enters the classroom.





# INSPECTION REPORT



## Summary of key findings and conclusion from the Standard Inspection of the Abbey Christian Brothers' Grammar School Newry

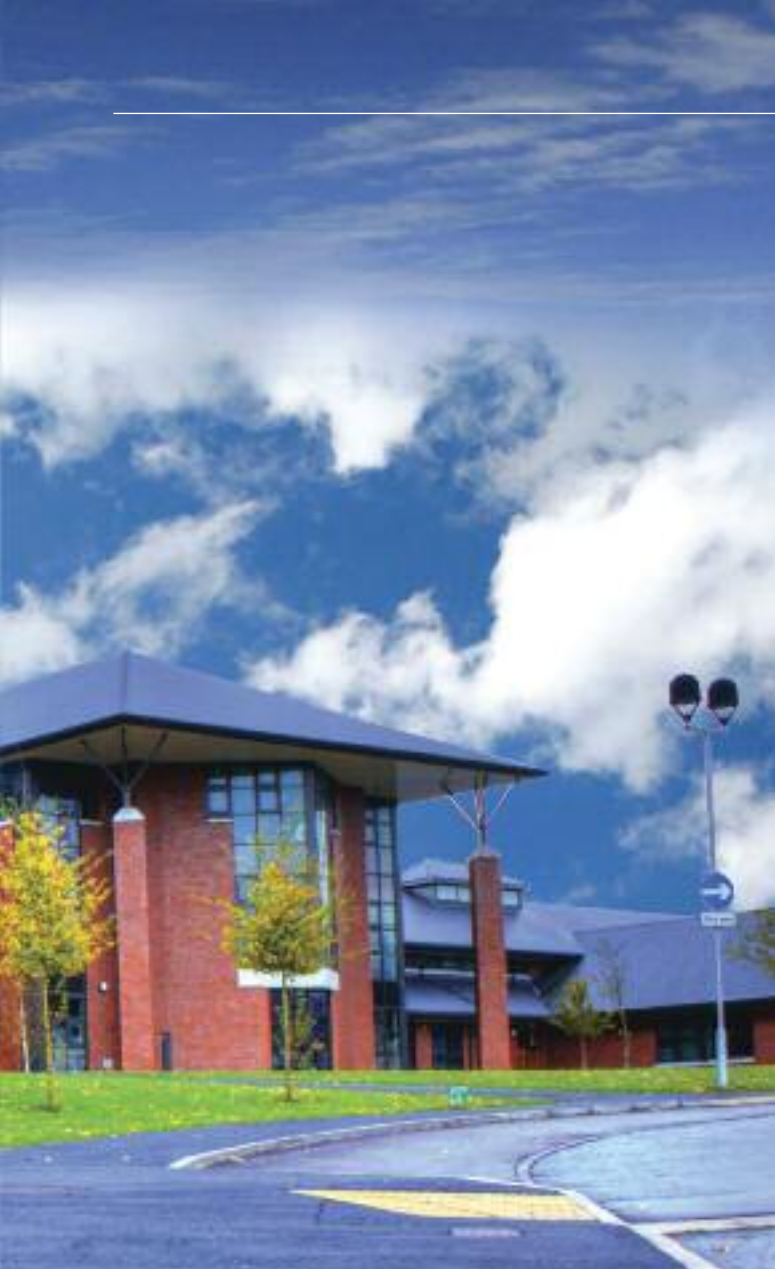
The standards achieved by the pupils are **OUTSTANDING**

The quality of learning, teaching and assessment is **OUTSTANDING**

The quality of the care, guidance and support of pupils is **OUTSTANDING**

The curricular provision for the pupils at KS3, KS4 and at post – 16 is **OUTSTANDING**

The leadership and management are **OUTSTANDING**



**October 2013**

## Conclusion

**In most of the areas inspected, the quality of education provided by this school is outstanding; the quality of pastoral care is also outstanding.**

**The school has demonstrated its capacity for sustained self improvement.**

### What they said about our pupils:

“ The pupils develop an excellent range of personal, social skills and dispositions as a result of the high quality teaching, care and guidance provided by the staff. The pupils are self-confident, open-minded, empathetic, responsible and exceptionally well prepared to contribute meaningfully to their community and to move to the next stage of their education. The pupils are very welcoming, confident and courteous; their behaviour both in and out of class is exemplary. ”

### What they said about our staff:

“ The excellent results reflect the high expectations of staff and the pupils’ very positive attitude to learning. The teachers plan very effectively for learning and have excellent subject knowledge. Working relationships are excellent at all levels and the staff are highly committed to the care and well-being of the pupils. There is a culture of open communication and professional respect among staff. ”

### What they said about what we provide:

“ The excellent careers provision is flexible, proactive and responsive to the individual needs, interests and aspirations of the pupils. Regular and effective monitoring of the provision ensures the pupils have access to up-to-date information and can make informed decisions in relation to subject choices and long-term careers goals. There is an excellent range of extra-curricular activities that enriches the educational and social experiences of most pupils. ”

### What they said about how we care:

“ The whole-school approach to the holistic development of the pupils is reflected in the learner-centred provision for careers, special educational needs and pastoral care, which complements and enhances the pupils’ learning across the curriculum. The pupils who require additional support with their learning are integrated well and involved fully in all aspects of school life. The high quality pastoral provision in the school is underpinned by mutual respect and pride in the school; a key strength is its close integration with teaching and learning. ”



## Spirituality

Time for study, for work, for recreation and for reflection are critical for both the well-being of the individual and the community. Life needs to be balanced and prayer is the fulcrum which protects the quality of our life. Time apart to focus on our spiritual needs is an absolute must if we are to become fully functioning and fully alive. As a Catholic community we will endeavour to foster a climate where prayer is an integral part of the school day, both collectively and individually. In particular, we will promote the rich legacy of Edmund Ignatius Rice and the spirituality of the Christian Brothers.

The development of Spirituality is at the heart of the Abbey. Outlined below are some examples of how we seek to promote the spiritual life within the school.

- A vibrant Religion Department which educates the mind and develops the spirit.
- Retreat Days for members of the School Community.
- Mission Outreaches to Africa organised for Senior Students.
- Projects to aid marginalised groups within Ireland.
- Frequent liturgical celebrations and prayer assemblies.
- Chaplaincy work that animates the faith life of the school
- Visiting Speakers to inspire and challenge in diverse areas of faith and life.
- Annual whole school Mass and Year Group masses.





## Careers Education, Information, Advice and Guidance

Careers Education, Information, Advice and Guidance is a very strong aspect of school life. It is not simply confined to senior school with pupils who are preparing for life after the Abbey, but is given its due regard from 1st Year. The main strengths are summarised below:

- Career planning and personal self-evaluation throughout LLW in Junior School
- All subjects are aware of their responsibility to promote careers awareness
- One to one careers guidance prior to subject choices
- Work related learning opportunities across all year groups
- with a strong focus on Years 11, 12, 13 and 14
- Individual interviews with a careers teacher
- A well-resourced careers information centre in school
- University visits and Guest Speakers
- A robust and supportive UCAS and CAO preparation system

## Parental Links

The Abbey recognises that a school is a living community consisting of staff, pupils and parents and that the parents are a vital element in this community. The Abbey Parent Teacher Association (A.P.T.A.) was launched in 1994 and has made a vital contribution to school life since

then. Meetings are held regularly within the school and each year a number of social and information evenings are organised. New policies and initiatives within the school are implemented after extensive consultation with parents via information documents, questionnaires and meetings of A.P.T.A.



# Homework

## 1st – 5th Year

Pupils making the transition from primary to grammar school experience a dramatic increase in the amount, variety and depth of homework and general study.

Homework is an essential part of life in the Abbey. Each subject area will give homework of many different types but what is required will be clearly explained to students. Each Monday morning all students will write in to their homework diary the subjects for each day that week. This enables them to write "No hw" or to put down accurately what is required and for what date.

It is the responsibility of each student to then complete the work. Parents are asked to supervise this process.

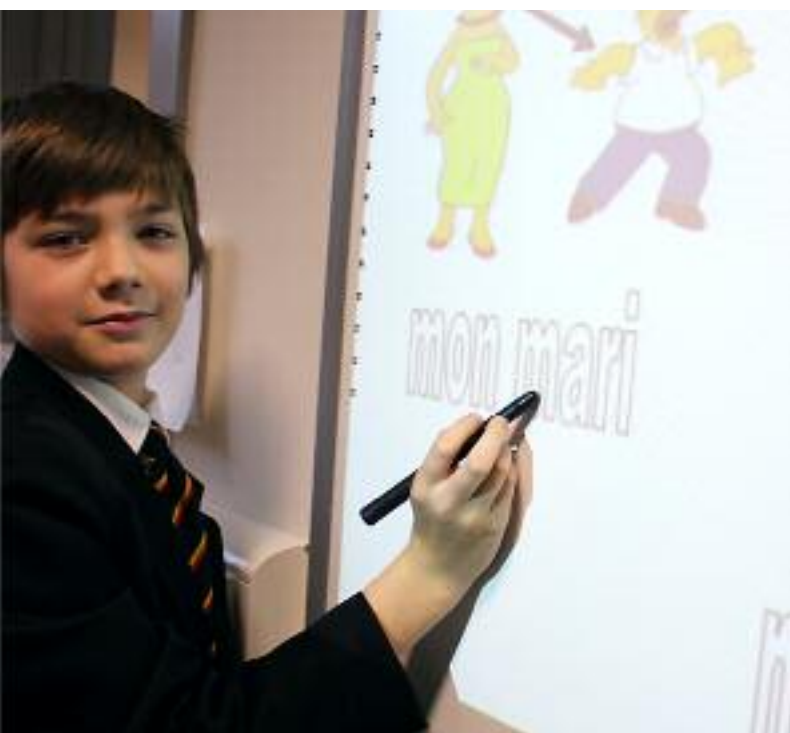
If a student does not complete homework then they should bring in a note from home explaining why it is not complete.

A student can expect a variety of responses to non completion of work:

- Extra work given by teacher
- Comment written in homework diary by teacher
- Phone call / letter home from teacher
- Detention for pupil
- Meeting with parents in school

## 6th – 7th Year

The focus in senior school moves away from the concept of "homework" to "independent study". It is no longer just the case that a piece of work is set and completed by the date asked. Although this is an integral part of study at A level it alone is not enough to guarantee success. Constant revision, independent reading and additional study are the key elements to achieving good grades. This is also closely monitored and students can expect a response from the school when problems arise.



# Curriculum

The Curriculum in the Abbey is a vibrant, living organism which reflects current educational thinking and the interests and abilities of the pupils. The Curriculum is based on the principles of breadth, depth, balance and relevance so that our pupils receive a broad, rounded education in their early years before they specialise at GCSE and A-Level. Following the National Curriculum the school is divided into three sections each of which follows a set Curriculum as outlined overleaf.



### Key Stage 3

In Junior School pupils are unstreamed and follow a broad curriculum which includes Religious Education, English, Mathematics, Science, History, Geography, French, Spanish, Irish, Art, Music, Information Technology, Technology & Design, Physical Education, Home Economics, Drama and Learning for Life and Work.

### Key Stage 4

Key Stage 4 pupils follow the prescribed Northern Ireland Common Curriculum. All year 12 pupils sit GCSE examinations while some year 11 pupils complete GCSE courses in a single year. The range of subjects on offer at this level enables all students to keep their career options open until they embark upon advanced level courses. Choices include all subjects at Key Stage 3 with the addition of Chemistry, Physics, Biology, Physical Education Studies, English Literature, Construction, Business Studies, ICT, Moving Images, LLW, Computer Science and Additional Mathematics.

### A-Level

Students who have acquitted themselves well in the GCSE examinations and having achieved a minimum of 7 passes with at least 3 at grade B level, are invited to do A-Levels in four subjects of their choice. As at GCSE, there is an extensive range of subjects offered, including all those at Key Stages 3 and 4 with the addition of Politics, Further Mathematics, Economics, Engineering, Accounting, Psychology, Moving Images and Sociology.

Our school has also recently established collaboration links with the Sacred Heart Grammar School by which A level classes in Sociology, Further Mathematics, Economics, Politics, Accounting, French, Moving Images and Psychology are shared. This co-educational experience is deeply rewarding for our students.



# Extra-Curricular Groups



The Abbey recognises the diverse interests of its pupils by making a major investment in the development of the whole student by participation in:

- An Cumann Gaelach
- Art Club
- Badminton
- Basketball
- Cooking Club
- Charity Work
- Chess Club
- Choir
- Computer Clubs
- Cross Country Running
- Debating Teams
- Drama Productions
- Fitness and Exercise
- Five-a-side Football
- Gaelic Football
- Golf
- Hurling
- Jazz Band
- Martial Arts
- Orchestra
- Politics Society
- Quiz Teams
- Rugby
- School Trips
- STEM Club
- Swimming
- Teaching in Rathore Special School
- Technology Club
- Traditional Group
- U.K. Mathematics Challenge
- Writing Club
- Young Enterprise
- Young Scientist of the Year
- Zambia Immersion Project





# Admissions Policy

The Board of Governors will admit pupils in to the Abbey based on their performance in the GL Assessment examination. Below are the admissions by results in that examination for the last three academic years. A full copy of our Admissions Policy is available on request and is in the SELB Guide for Parents.

## APPLICATIONS AND ADMISSIONS TO YEAR 8

|  | School Year 2011/2012 |            | School Year 2012/2013 |            | School Year 2013/2014 |            |
|--|-----------------------|------------|-----------------------|------------|-----------------------|------------|
|  | App                   | Adm        | App                   | Adm        | App                   | Adm        |
| Grade A  | 83                    | 82         | 104                   | 104        | 99                    | 99         |
| Grade B1   | 30                    | 30         | 17                    | 17         | 17                    | 17         |
| Grade B2   | 26                    | 13         | 28                    | 8          | 10                    | 9          |
| Grade C1   | 10                    | 0          | 23                    | 0          | 15                    | 0          |
| Grade C2   | 9                     | 0          | 12                    | 0          | 7                     | 0          |
| Grade D  | 5                     | 0          | 14                    | 0          | 11                    | 0          |
| Other<br><small>(including SEN and SELB Appeals)</small> | 6                     | 5          | 6                     | 4          | 11                    | 9          |
| <b>TOTAL</b>   | <b>169</b>            | <b>130</b> | <b>204</b>            | <b>133</b> | <b>170</b>            | <b>134</b> |



**TOP SCHOOLS IN N. IRELAND A LEVEL**

| Rank | School                           | Type  | % Pupils Achieving 3+ A Levels A*-C |
|------|----------------------------------|-------|-------------------------------------|
| 1    | Lumen Christi, Derry             | Mixed | 94                                  |
| 1    | Friends' School, Lisburn         | Mixed | 94                                  |
| 1    | St Louis, Ballymena              | Mixed | 94                                  |
| 4    | Our Lady's Grammar, Newry        | Girls | 92                                  |
| 4    | St Joseph's Grammar, Donaghmore  | Mixed | 92                                  |
| 4    | St Dominic's Belfast             | Girls | 92                                  |
| 7    | Our Lady & St Patrick's, Knock   | Mixed | 89                                  |
| 7    | Rathmore Grammar, Belfast        | Mixed | 89                                  |
| 9    | St Mary's, Magherafelt           | Mixed | 88                                  |
| 9    | Loreto College, Coleraine        | Mixed | 88                                  |
| 11   | St Patrick's Dungannon           | Mixed | 87                                  |
| 12   | Abbey Christian Brothers', Newry | Boys  | 86                                  |
| 12   | Aquinas, Belfast                 | Mixed | 86                                  |
| 12   | Dominican College, Belfast       | Girls | 86                                  |
| 12   | St Louis Grammar School, Kilkeel | Mixed | 86                                  |

Source: The Irish News, August 2013



## GCE A2-LEVEL RESULTS BY DEPARTMENT - SUMMER 2013

| SUBJECT              | Entrants | A* | A  | B  | C | D | E | % A*-C | % A*-E | NI%  |              |
|----------------------|----------|----|----|----|---|---|---|--------|--------|------|--------------|
|                      |          |    |    |    |   |   |   |        |        | A*-C | Boys Grammar |
| ACCOUNTS             | 10       |    | 3  | 4  | 3 |   |   | 100    | 100    |      | 77           |
| ART AND DESIGN       | 4        | 2  | 1  | 1  |   |   |   | 100    | 100    |      | 88           |
| BIOLOGY              | 25       | 3  | 8  | 9  | 4 | 1 |   | 96     | 100    |      | 83           |
| BUSINESS ST.         | 10       |    | 1  | 5  | 3 |   | 1 | 90     | 100    |      | 86           |
| CHEMISTRY            | 13       | 5  | 3  | 3  | 1 | 1 |   | 92     | 100    |      | 86           |
| CONSTRUCTION         | 22       | 16 | 6  |    |   |   |   | 100    | 100    |      |              |
| DES & TECH NI        | 6        | 2  | 1  | 3  |   |   |   | 100    | 100    |      | 88           |
| DES & TECH RM        | 4        |    | 2  |    | 2 |   |   | 100    | 100    |      | 67           |
| DRAMA                | 10       |    | 1  | 6  | 2 | 1 |   | 90     | 100    |      | 91           |
| ENGINEERING          | 8        | 2  | 4  |    | 2 |   |   | 100    | 100    |      |              |
| ENGLISH LITERATURE   | 19       | 4  | 5  | 5  | 3 | 2 |   | 89     | 100    |      | 82           |
| ENGLISH LANGUAGE     | 10       |    | 1  | 6  | 3 |   |   | 100    | 100    |      | 87           |
| FRENCH               | 2        |    | 1  | 1  |   |   |   | 100    | 100    |      | 87           |
| FURTHER MATHS (A/S)  | 5        | 4  |    | 1  |   |   |   | 100    | 100    |      | 95           |
| GEOGRAPHY            | 24       | 1  | 6  | 9  | 4 | 2 | 1 | 83     | 96     |      | 85           |
| HISTORY              | 27       | 1  | 14 | 8  | 4 |   |   | 100    | 100    |      | 85           |
| ICT                  | 53       | 3  | 17 | 17 | 8 | 8 |   | 84     | 100    |      | 80           |
| IRISH                | 12       |    | 7  | 5  |   |   |   | 100    | 100    |      | 91           |
| MATHEMATICS          | 28       | 3  | 9  | 8  | 8 |   |   | 100    | 100    |      | 87           |
| MUSIC                | 6        |    |    | 4  | 2 |   |   | 100    | 100    |      | 94           |
| PHYSICAL ED. STUDIES | 9        |    | 3  | 3  | 3 |   |   | 100    | 100    |      | 65           |
| PHYSICS              | 20       | 1  | 5  | 8  | 2 | 2 | 2 | 80     | 100    |      | 80           |
| POLITICS             | 5        |    | 1  | 4  |   |   |   | 100    | 100    |      | 88           |
| PSYCHOLOGY           | 12       |    | 1  | 2  | 4 |   | 4 | 58     | 92     |      | 57           |
| RELIGIOUS EDUCATION  | 17       |    | 10 | 7  |   |   |   | 100    | 100    |      | 88           |
| SOCIOLOGY            | 9        |    |    | 2  | 4 |   | 1 | 67     | 78     |      | 75           |
| SPANISH              | 13       |    | 5  | 4  | 3 | 1 |   | 92     | 100    |      | 90           |

## GCSE RESULTS BY DEPARTMENT - SUMMER 2013

| SUBJECT                | Entrants | A* | A  | B  | C  | A*-B | A*-C | NI%  |      |
|------------------------|----------|----|----|----|----|------|------|------|------|
|                        |          |    |    |    |    |      |      | A*-B | A*-C |
| Art and Design         | 14       | 1  | 7  | 4  | 2  | 86   | 100  | 74   | 94   |
| Biology                | 28       | 9  | 4  | 10 | 3  | 82   | 93   | 72   | 94   |
| Bus Studies            | 30       | 5  | 8  | 12 | 5  | 83   | 100  | 64   | 87   |
| Chemistry              | 19       | 4  | 6  | 6  | 3  | 84   | 100  | 75   | 93   |
| Construction           | 16       | 1  | 6  | 9  |    | 100  | 100  | 70   | 93   |
| Drama                  | 26       | 2  | 9  | 12 | 3  | 88   | 100  | 81   | 95   |
| English Language       | 135      | 10 | 40 | 62 | 20 | 83   | 98   | 69   | 94   |
| English Literature     | 134      | 17 | 52 | 54 | 9  | 92   | 99   | 68   | 92   |
| French                 | 27       | 4  | 6  | 5  | 10 | 56   | 93   | 57   | 91   |
| Geography              | 65       | 7  | 27 | 18 | 8  | 80   | 92   | 69   | 88   |
| History                | 56       | 12 | 23 | 13 | 7  | 86   | 98   | 79   | 94   |
| Irish                  | 60       | 17 | 19 | 16 | 8  | 87   | 100  | 73   | 92   |
| ICT                    | 59       | 15 | 26 | 17 | 1  | 98   | 100  | 86   | 94   |
| Life and Work          | 28       | 1  | 9  | 10 | 6  | 71   | 93   | 78   | 95   |
| Maths                  | 136      | 19 | 46 | 44 | 22 | 80   | 96   | 78   | 97   |
| GCSE Maths in one Year | 60       | 16 | 35 | 9  |    | 100  | 100  | 78   | 97   |
| Add Maths              | 47       | 4  | 11 | 16 | 9  | 67   | 87   | 77   | 93   |
| Moving Images          | 6        | 1  | 1  | 1  | 2  | 50   | 83   | 74   | 91   |
| Music                  | 16       |    | 8  | 5  | 2  | 81   | 94   | 89   | 98   |
| PE Studies             | 31       | 6  | 18 | 6  | 1  | 97   | 100  | 77   | 90   |
| Physics                | 29       | 3  | 11 | 7  | 6  | 72   | 97   | 74   | 92   |
| Religious Education    | 136      | 18 | 48 | 40 | 15 | 78   | 89   | 70   | 87   |
| Science (Double Award) | 93       | 5  | 21 | 43 | 22 | 74   | 98   | 63   | 92   |
| Spanish                | 69       | 10 | 19 | 24 | 13 | 77   | 96   | 64   | 87   |
| Technology             | 40       | 1  | 11 | 16 | 8  | 70   | 90   | 72   | 93   |



# Bus Services

## Service 33 Rathfriland – Newry - Rathfriland

| Morning                             | Afternoon                            |
|-------------------------------------|--------------------------------------|
| 7.40am: Departs Rathfriland         | 3.25pm: Departs Abbey Grammar School |
| 7.55am: Hilltown Bus Shelter        | 3.40pm: Mayobridge                   |
| 8.10am: Mayobridge                  | 3.50pm: Hilltown Bus Shelter         |
| 8.25am: Arrives at Newry Bus Centre | 4.00pm: Rathfriland                  |

Stopping at all stops along the way – morning service connecting with link bus to the Abbey

## Service 33 Rathfriland – Newry - Rathfriland

| Morning                      | Afternoon                            |
|------------------------------|--------------------------------------|
| 7.50am: Departs Rathfriland  | 3.25pm: Departs Abbey Grammar School |
| 8.00am: Drumgath             | 3.40pm: Mayobridge                   |
| 8.10am: Mayobridge           | 3.50pm: Drumgath                     |
| 8.30am: Abbey Grammar School | 4.00pm: Rathfriland                  |

Stopping at all stops along the way – morning service connecting with link bus to the Abbey

## Service 35 Rathfriland – Newry - Rathfriland

| Morning                      | Afternoon                            |
|------------------------------|--------------------------------------|
| 8.05am: Departs Rathfriland  | 3.25pm: Departs Abbey Grammar School |
| 8.15am: Shinn Crossroads     | 3.50pm: Shinn Crossroads             |
| 8.40am: Abbey Grammar School | 4.00pm: Rathfriland                  |

A number of buses from areas such as Annaclone, Katesbridge, Turleys Corner, Cabra and Kilcoo meet up in Rathfriland and connect with the 35 which takes the pupils to the Abbey.

## Service 38 Banbridge (Busy Bus) –Designated School Bus

| Morning                            | Afternoon  |
|------------------------------------|--|
| 8.10am: Departs Downshire Caravans | 3.25pm: Departs Abbey Grammar School to Banbridge via Newry Bus Centre |
| 8.40am: Abbey Grammar School       |  |

## Service 39 Warrenpoint

| Morning                                   | Afternoon  |
|---|--|
| 8.25am: Departs Havern's Shop Warrenpoint | 3.25pm: Departs Abbey Grammar School – Link Bus. Extending to Warrenpoint Road |
| 8.50am: Abbey Grammar School              |  |

## Service 39 Rostrevor/Warrenpoint (Double Decker)

This is a service that goes direct to school. All pupils living on the Kilkeel side of Rostrevor board the bus at Rostrevor. The Bus departs from Rostrevor Square at approximately 8.15 am and stops at a number of stops on route to the Abbey including:

| Morning                                   | Afternoon                                   |
|---|---|
| 8.15am: Rostrevor                         | 3.25pm: Departs Abbey Grammar School        |
| 8.50am: Tinnelly's Petrol Station         | 3.40pm: Warrenpoint Square                  |
| 8.25am: Lay by Rostrevor/Warrenpoint Road | 3.45pm: Moygannon / Shore Road              |
| 8.30am: Moygannon / Shore Road            | 3.50pm: Lay by Rostrevor / Warrenpoint Road |
| 8.50am: Abbey Grammar School              | 3.55pm: Tinnelly's Petrol Station           |
|   | 4.00pm: Rostrevor                           |

## Service 40 Armagh - Newry

| Morning                      | Afternoon                    |
|------------------------------|------------------------------|
| 7.40am: Lonsdale Road Armagh | 3.25pm: Abbey Grammar School |
| 7.55am: Waugh's Crossroads   | 3.35pm: Newry Bus Centre     |
| 8.00am: Markethill           | 8.10am: Mountnorris          |
| 8.35am: Crankey Crossroads   | 8.45am: Newry Bus Centre     |

Another bus runs from Markethill @ 7.50am – Glenanne 8.13am to Newry Bus centre 8.40 am. This bus travels via Cladymore. Bus connects with the Abbey Link Bus departing from the Bus centre @ 8.50am to Abbey Grammar School.

## Service 41 Bessbrook - Newry

| Morning                   | Afternoon                    |
|---------------------------|------------------------------|
| 8.20am: Charlemont Square | 3.25pm: Abbey Grammar School |
| 8.30am: Newry Bus Centre  | 3.35pm: Newry Bus Centre     |

This bus travels via the Green Road and Camlough Road to Newry. Bus Connects with the Abbey Link Bus departing from the Bus Centre @ 8.50 am. Return Departs Bus Centre at 3.40 pm & 4.00pm

Two Buses operate on Service 42 direct from School to (1) Crossmaglen & (2) Mullaghbawn

## Service 42 Crossmaglen (Bus 1)

| Morning                    | Afternoon   |
|----------------------------|---|
| 7.45am: Depart Crossmaglen | 3.25pm: Abbey Grammar School Bus (1) Direct to Crossmaglen                  |
| 8.00am: Drumill Bridge     | Stopping at: Tierney's Crossroads for Culloville & Tullydonnell connections |
| 8.30am: Camlough           |   |
| 8.45am: Newry Bus Centre   |   |

## Service 42 Crossmaglen (Bus 2)

| Morning                    | Afternoon   |
|----------------------------|---|
| 7.45am: Depart Culloville  | 3.25pm: Abbey Grammar School Bus (1) Direct to Crossmaglen                  |
| 8.00am: Crossmaglen Square | Stopping at: Tierney's Crossroads for Culloville & Tullydonnell connections |
| 8.30am: Camlough           |   |
| 8.45am: Newry Bus Centre   |   |

## Service 42 Crossmaglen (Bus 3)

| Morning                  | Afternoon   |
|--------------------------|---|
| 7.35am: Depart Creggan   | 3.25pm: Abbey Grammar School Bus (1) Direct to Crossmaglen                  |
| 7.45am: Ballsmill        | Stopping at: Tierney's Crossroads for Culloville & Tullydonnell connections |
| 8.00am: Tullydonnell     |   |
| 8.40am: Newry Bus Centre |   |

## Service 42 Crossmaglen (Bus 4)

| Morning                      | Afternoon   |
|------------------------------|---|
| 8.00am: Departs Silverbridge | 3.25pm: Abbey Grammar School Bus (1) Direct to Crossmaglen                  |
| 7.45am: Camlough             | Stopping at: Tierney's Crossroads for Culloville & Tullydonnell connections |
| 8.00am: Newry Bus Centre     |   |

## Service 42 Crossmaglen (Bus 5)

| Morning                     | Afternoon   |
|-----------------------------|---|
| 8.00am: Departs Crossmaglen | 3.25pm: Abbey Grammar School Bus (1) Direct to Crossmaglen                  |
| 8.08am: Silverbridge        | Stopping at: Tierney's Crossroads for Culloville & Tullydonnell connections |
| 8.23am: Lislea              |   |
| 8.35am: Newry Bus Centre    |   |

## Service 42 Crossmaglen (Bus 6)

| Morning  | Afternoon   |
|--|---|
| 8.07am: Departs O'Hanlon's Bridge, Mullaghbawn | 3.25pm: Abbey Grammar School                                  |
| 8.08am: Mill Road junction Newry Road          | Bus (2) Mullaghbawn via Camlough servicing All stops on route |
| 8.25am: Camlough                               |   |
| 8.35am: Newry Bus Centre                       |   |



## Service 43 Forkhill - Newry

| Morning                  | Afternoon  |
|--------------------------|--|
| 8.00am: Forkhill         | 3.25pm: Abbey Grammar School (Link Bus) to Newry Bus Centre- Connecting Services for Carrivemaclone, Meigh, Killnasaggart, Dromintee |
| 8.05am: Dromintee        | 4.00pm: Departs Newry Bus Centre   |
| 8.10am: Meehan's Corner  |  |
| 8.12am: Chambre School   |  |
| 8.16am: Murray's Corner  |  |
| 8.20am: Meigh Crossroads |  |
| 8.35am: Newry Bus Centre |  |

## Service 43 Killnasaggart - Newry

| Morning                                 | Afternoon  |
|---|--|
| 8.00am: Killnasaggart                   | 3.25pm: Abbey Grammar School (Link Bus) to Newry Bus Centre- Connecting Services for Carrivemaclone, Meigh, Killnasaggart, Dromintee |
| 8.45am: Newry Bus Centre                | 4.00pm: Departs Newry Bus Centre   |
| Bus will stop at any bus stop on route. |  |

## Service 44 Newtownhamilton

| Morning                   | Afternoon   |
|---------------------------|---|
| 7.45am: Cullyhanna Square | 3.35pm: Abbey Grammar School Going direct to Newtownhamilton via Camlough & Belleek |
| 8.10am: Newtownhamilton   |   |
| 8.25am: Camlough          |   |
| 8.40am: Newry Bus Centre  |   |

The two buses on this route stop at alternate stops along route.

## Service 44 Newtownhamilton (New Bus on Route)

| Morning                  | Afternoon   |
|--------------------------|---|
| 8.15am: Departs Belleeks | 3.35pm: Abbey Grammar School Going direct to Newtownhamilton via Camlough & Belleek |
| 8.25am: Camlough         |   |
| 8.45am: Newry Bus Centre |   |

## Service 63 Portadown – Tandragee – Newry

| Morning                  | Afternoon                                  |
|--------------------------|--|
| 7.45am: Portadown        | 3.25pm: Abbey Grammar School               |
| 7.57am: Laurelvale       | 3.35pm: Newry Bus Centre (Link Bus)        |
| 8.05am: Tandragee        | 3.45pm: Connecting Service 63 to Portadown |
| 8.15am: Scarva           | Servicing all Stops                        |
| 8.23am: Poyntzpass       |  |
| 8.42am: Newry Bus Centre |  |

## Burren

Yellow Bus picks up at Carrick Primary – Milltown Street – Grinan Road arriving at Abbey Grammar School.

Yellow Bus departs from the Abbey Grammar School @ 3.40pm

## Glenn Route

| Morning                                  | Afternoon                                    |
|--|--|
| 8.00am: Glenn Cottages                   | 3.25pm: Abbey Grammar School(Link Bus)       |
| 8.03am: Chapel                           | 3.35pm: Newry Bus Centre                     |
| Arrives into Newry Bus Centre            | 4.00pm: Connecting Service from Stone Bridge |
| Bus goes Belfast Road on route to Newry. |  |

## Service 45 - Glenn

| Morning                       | Afternoon                                    |
|-------------------------------|--|
| 8.00am: Glenn Villas          | 3.25pm: Abbey Grammar School(Link Bus)       |
| Arrives into Newry Bus Centre | 3.35pm: Newry Bus Centre                     |
| Pick up points along route.   | 4.00pm: Connecting Service from Stone Bridge |

## Service 63 Portadown to Newry

| Morning                                  | Afternoon                    |
|--|------------------------------|
| 7.45am: Departs Carlton Square Portadown | 3.25pm: Abbey Grammar School |
| 8.40am: Newry Bus Centre                 | 3.35pm: Newry Bus Centre     |
| 8.50am: Abbey Grammar School             | 3.45pm: Newry to Portadown   |
|  | 4.45pm: Portadown            |

## Service 63H Lurgan to Newry

Students from Craigavon come to Newry on a bus which is shared with the Sacred Heart School. Details are below

| Morning                        | Afternoon                                    |
|--------------------------------|--|
| 7.50 am Craigavon Depot        | 3.30pm Sacred Heart Grammar School           |
| 7.52 am Highfield Park         | 3.35pm Abbey Grammar School                  |
| 7.55 am The Lakes              | 4.30pm Arrives Craigavon Depot               |
| 7.56 am Pine Bank              | Stopping at all designated stops along Route |
| 8.00 am Lurgan (Market Street) |  |
| 8.15 am Gilford                |  |
| 8.50 am Abbey Grammar School   |  |

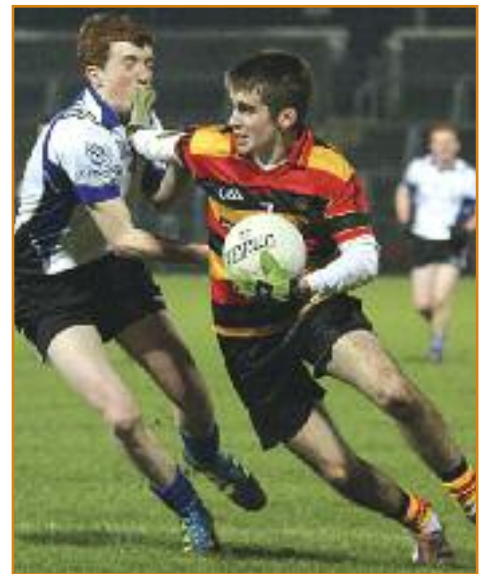
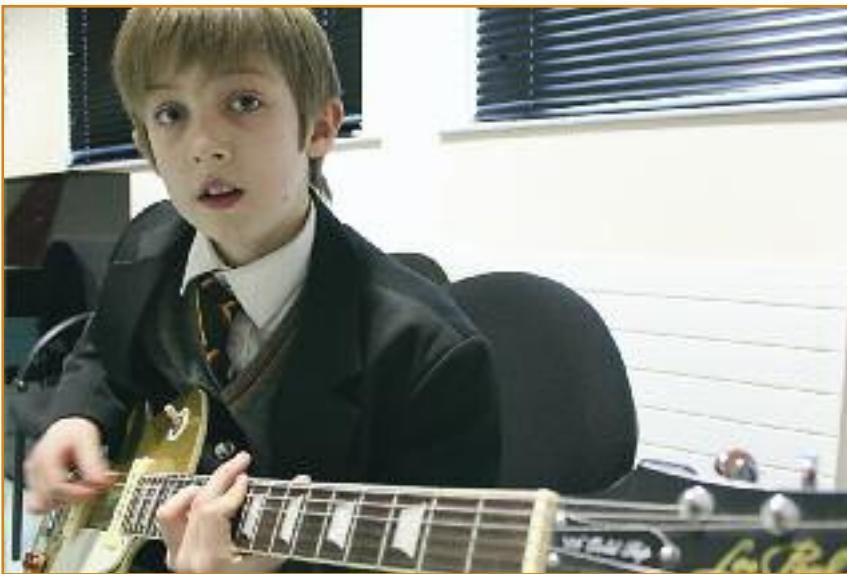
For after school activities bus departs Abbey Grammar School at 4.35 pm for connecting services at Newry Bus Centre

Buses leave from the Bus Centre after 3.20pm at the following times.

|            |  |
|------------|--|
| Service 33 | Newry – Rathfriland via Mayobridge 5.30pm        |
| Service 35 | Newry – Rathfriland via Shinn 5.40pm             |
| Service 38 | Newry – Dromore – Belfast 5.50pm                 |
| Service 39 | Newry – Warrenpoint – Rostrevor – Kilkeel 5.15pm |
| Service 40 | Newry – Armagh 6.10pm                            |
| Service 41 | Newry – Bessbrook 5.00pm                         |
| Service 43 | Newry – Forkhill 5.10pm & 6.15pm                 |



*Bring your dreams and together we'll look to the future...*





LEARNING



INNOVATION



TALENT



SUCCESS



FUN



CHARITY



TRAVEL



FRIENDSHIP